

Type : EP Cores

Ordering Code:

P4

EP7

G□

Shape:

Material

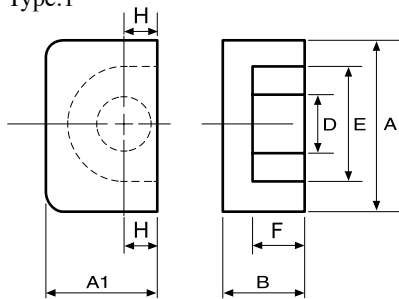
Core Size

Gapped AL Value

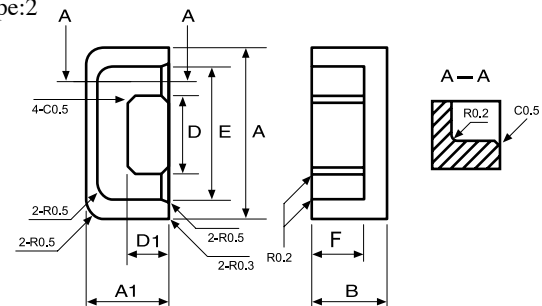
Type:1

Shape:

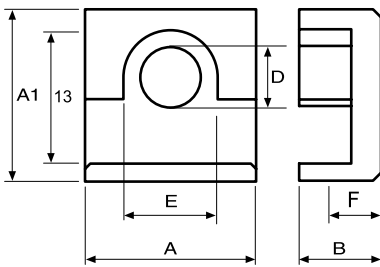
Type:1



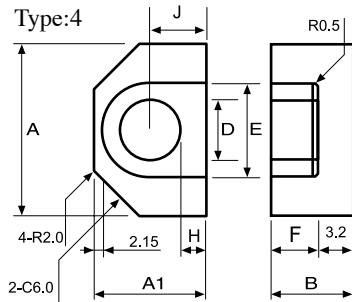
Type:2



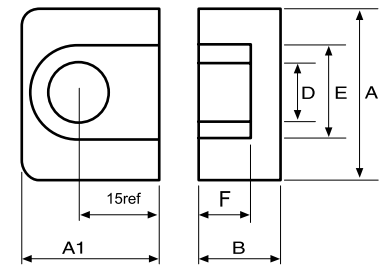
Type:3



Type:4



Type:5



■ DIMENSIONS

CORES	DIMENSIONS (mm)									Type
	A	A1	B	D	E	F	H	J	T	
EP5	6.00 ± 0.15	3.80 ± 0.10	2.80 ± 0.05	1.70 ± 0.10	4.40 ± 0.15	2.00 ± 0.10	-	-	-	1
EP5-1	6.00 ± 0.15	3.80 ± 0.10	3.40 ± 0.05	1.70 ± 0.10	4.40 ± 0.15	2.60 ± 0.10	-	-	-	1
EP7	9.20 ± 0.20	6.35 ± 0.15	3.75 $\begin{smallmatrix} +0.00 \\ -0.10 \end{smallmatrix}$	3.30 ± 0.10	7.40 ± 0.20	2.60 ± 0.10	-	-	-	1
EP7-1	9.20 ± 0.20	6.35 ± 0.15	4.75 ± 0.05	3.30 ± 0.10	7.40 ± 0.20	3.60 ± 0.10	1.70 (ref)	-	-	1
EP7C	9.40 ± 0.20	6.50 ± 0.15	3.70 ± 0.10	3.30 ± 0.10	7.40min	2.60 ± 0.10	-	-	-	1
EP10	11.50 ± 0.30	7.65 ± 0.20	5.20 $\begin{smallmatrix} +0.00 \\ -0.10 \end{smallmatrix}$	3.30 ± 0.15	9.40 ± 0.20	3.70 ± 0.10	-	-	-	1
EP11.8	11.80 ± 0.30	7.70 ± 0.20	5.10 ± 0.20	3.30 ± 0.20	9.70 ± 0.20	3.80 ± 0.20	-	-	-	1
EP13	12.50 ± 0.30	8.80 ± 0.20	6.50 $\begin{smallmatrix} +0.00 \\ -0.15 \end{smallmatrix}$	4.35 ± 0.15	10.10 ± 0.20	4.60 ± 0.10	-	-	-	1
EP13.3	13.30 ± 0.20	5.50 ± 0.15	6.50 ± 0.10	5.60 ± 0.10	10.80 ± 0.20	4.55 ± 0.10	-	-	-	2
EP15.2	15.20 ± 0.30	11.00 ± 0.20	7.10 ± 0.15	5.40 ± 0.20	11.00min	4.60 ± 0.15	-	-	-	1
EP16	16.00 ± 0.25	16.00 ± 0.25	4.40 ± 0.10	7.89 ± 0.20	13.00 ± 0.25	2.40 ± 0.20	-	-	-	3
EP17	18.00 ± 0.40	11.00 ± 0.20	8.40 ± 0.20	5.68 ± 0.18	12.00 ± 0.40	5.65 ± 0.15	-	-	-	1
EP25.6	25.60 ± 0.50	21.40 ± 0.40	17.45 ± 0.20	9.70 ± 0.20	19.00 ± 0.30	14.25 ± 0.20	4.90 ± 0.20	9.75 ± 0.20	3.20 ± 0.10	4
EP31	31.00 ± 0.50	30.00 ± 0.45	9.50 ± 0.15	14.60 ± 0.30	25.80 ± 0.50	5.50 ± 0.15	-	-	-	5

■ EFFECTIVE PARAMETERS

CORES	EFFECTIVE PARAMETERS				
	$C_t(\text{mm}^{-1})$	$L_e(\text{mm})$	$A_e(\text{mm}^2)$	$V_e(\text{mm}^3)$	$W_t(\text{g/set})$
EP5	3.20	9.70	3.00	28.70	0.46
EP5-1	3.60	10.80	3.00	32.40	0.46
EP7	1.52	15.70	10.30	162.00	1.42
EP7-1	1.68	17.96	10.66	191.45	1.42
EP7C	1.44	15.37	10.67	164.00	1.44
EP10	1.70	19.20	11.30	217.00	2.92
EP11.8	1.77	19.63	11.10	217.90	3.10
EP13	1.24	24.20	19.50	472.00	4.86
EP13.3	1.40	24.42	17.35	423.68	3.14
EP15.2	0.81	24.82	30.76	763.41	4.50
EP16	0.37	19.75	54.09	1068.05	9.54
EP17	0.84	28.70	34.00	970.00	11.60
EP25.6	0.67	59.98	89.43	5364.52	51.80
EP31	0.22	42.08	190.89	8032.65	54.90

■ ELECTRICAL CHARACTERISTICS

CORES	AL + 30% - 20% (nH/N ²)					AL + 40% - 30% (nH/N ²)				
	P4	P5	N42	A05	A05(L)	A101	A101(L)	A121	A121(L)	A151(L)
EP5	400 ± 25%	380 ± 25%	500 ± 25%	530 ± 25%		600	1900	650	2050	1582min
EP5-1	380 ± 25%		450 ± 25%				1850			
EP7	1100	1000	1350 ± 25%	1600 ± 25%	3500	2050	5200	2100	3900min	4430min
EP7-1	1000 ± 25%	900 ± 25%	1380			1980				
EP7C	1100									
EP10	1000	950	1270 ± 25%	1600 ± 25%	3400	2050 ± 30%	4800	2150	3950min	4400min
EP11.8										4200min
EP13	1600	1430		2800	4400	3300	7000	3500	5800min	7000min
EP13.3										5850min
EP15.2						5160 (ref)				
EP16	4500									
EP17	2500	2300 ± 25%	3060 ± 25%	3970 ± 25%			11000		12600	14000
EP25.6	3500									
EP31	9300 ± 25%		12800 ± 25%							

Remark:

1. AL Value Testing Condition : 10kHz, 50mV, 100Ts.
2. Gapped core is available, please specify upon request & ordering.
gapping on both pcs to make a set is needed, please specify upon request & ordering.
3. L : Mirror Finished Lapping. Please specify upon request & ordering by adding "L" at the end of Core Size if you need.