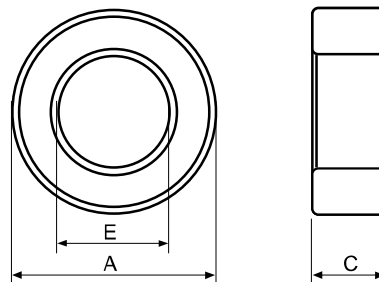
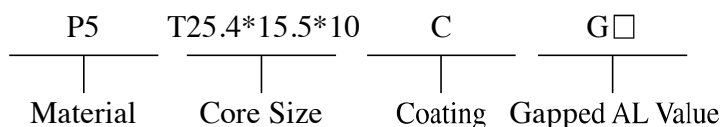


Type : T Cores

Ordering Code:

Shape:



C : Epoxy Coating of Halogen-Free HUC : Epoxy Coating of UL & Halogen-Free
 HP : Parylene Coating of Halogen-Free W : Powder Coating of Halogen-Free

■ DIMENSIONS AND EFFECTIVE PARAMETERS

CORES	DIMENSIONS (mm)			EFFECTIVE PARAMETERS				
	EPOXY COATING DIMENSIONS (mm)			C _i (mm ⁻¹)	Le(mm)	Ae(mm ²)	Ve(mm ³)	Wt(g/set)
	A	E	C					
T25.4x15.5x10	25.40 ± 0.40	15.50 ± 0.40	10.00 ± 0.30	1.27	61.71	48.51	2993.10	15.71
	26.40max	14.50min	10.90max					
T26x14.5x10	26.00 ± 0.40	14.50 ± 0.30	10.00 ± 0.30	1.08	60.14	55.89	3361.47	17.68
	27.00max	13.60min	10.90max					
T26.4x14.5x10.2	26.40 ± 0.40	14.50 ± 0.40	10.20 ± 0.30	1.03	60.56	58.91	3567.13	18.92
	27.40max	13.50min	11.10max					
T28x12x12	28.00 ± 0.40	12.00 ± 0.30	12.00 ± 0.25	0.62	55.90	90.46	5056.48	28.62
	29.00max	11.10min	12.85max					
T28x14x12	28.00 ± 0.60	13.80 ± 0.40	12.00 ± 0.40	0.76	60.97	80.72	4921.46	26.60
	29.20max	12.80min	13.00max					
T28x16x13	28.00 ± 0.50	16.00 ± 0.40	13.00 ± 0.40	0.86	65.64	76.00	4988.00	26.30
	29.10max	15.00min	14.00max					
T28x18x16	28.00 ± 0.50	18.00 ± 0.40	16.00 ± 0.40	0.89	69.96	78.71	5506.49	26.57
	29.10max	17.00min	17.00max					
T29x19x7.49	29.00 ± 0.50	19.00 ± 0.35	7.49 ± 0.15	1.98	73.20	36.90	2700.75	12.90
	30.10max	18.05min	8.24max					
T29x19x15.2	29.00 ± 0.50	19.00 ± 0.35	15.20 ± 0.30	0.98	73.20	74.88	5480.84	27.73
	30.10max	18.05min	16.00max					
T31x19x6	31.00 ± 0.50	19.00 ± 0.50	6.00 ± 0.30	2.14	75.49	35.29	2663.95	13.22
	32.10max	17.90min	6.90max					
T31x19x8	31.00 ± 0.50	19.00 ± 0.50	8.00 ± 0.30	1.60	75.49	47.05	3551.93	18.12
	32.10max	17.90min	8.90max					
T31x19x12	31.00 ± 0.50	19.00 ± 0.50	12.00 ± 0.40	1.07	75.49	70.58	5327.90	26.99
	32.10max	17.90min	13.00max					
T31x19x13	31.00 ± 0.50	19.00 ± 0.50	13.00 ± 0.40	0.99	75.49	76.46	5771.89	29.04
	32.10max	17.90min	14.00max					
T31x19x16	31.00 ± 0.50	19.00 ± 0.50	16.00 ± 0.40	0.80	75.49	94.11	7103.86	35.74
	32.10max	17.90min	17.00max					
T31x20x15	31.00 ± 0.50	20.00 ± 0.50	15.00 ± 0.50	0.96	77.60	81.19	6300.71	30.72
	32.10max	18.90min	16.00max					
T34.4x20.2x12.6	34.40 ± 0.50	20.20 ± 0.50	12.60 ± 0.40	0.94	81.84	87.38	7151.28	36.92
	35.50max	19.10min	13.60max					
T34.74x5.4x1.0	34.74 ± 0.50	5.40 ± 0.25	1.00 ± 0.10	3.38	37.39	11.08	414.22	4.23
	-	-	-					
T36x23x15	36.00 ± 0.60	23.45 ± 0.50	15.00 ± 0.40	0.93	89.65	95.89	8595.89	41.37
	37.20max	22.35min	16.00max					
T36x23Ax22	36.00 ± 0.60	23.45 ± 0.50	22.00 ± 0.40	0.67	90.58	135.96	12315.43	62.50
	37.20max	22.35min	23.00max					
T36x25x11.3	36.00 ± 0.50	25.00 ± 0.40	11.30 ± 0.30	1.52	93.73	61.47	5761.05	27.30
	37.10max	24.00min	12.20max					
T36x26x10	36.00 ± 0.60	26.00 ± 0.50	10.00 ± 0.40	1.93	95.69	49.56	4742.57	19.50
	37.20max	24.90min	11.00max					

MANUFACTURING CAPABILITY

Gapped Toroid Sizes(OD)	12.00mm - 38.00mm
Height	3.00mm - 15.00mm
Gap Sizes :	0.45mm - 2.00mm
AL Tolerance	AL \pm 10%

APPLICATIONS

Power	DC-DC Converters Compact Power Transformer Small, Low Profile Power Inductors
Telecom	xDSL pass-band Filiterers Splitters EMI Inductors Filiter Inductors with Tight Tolerance

■ ELECTRICAL CHARACTERISTICS

CORES	AL \pm 25% (nH/N ²)						AL \pm 30% (nH/N ²)			
	P4	P47	P5	N42	A05	A07	A10	A102	A121	A151
T25.4x15.5x10	2420		1940		4840		9680	9680		14530
T26x14.5x10					5680		11370	11370		
T26.4x14.5x10.2					5940		11880	11880		
T28x12x12	6500									
T28x14x12		5100								
T28x16x13	3550					9900	14110	14110	17000	
T28x18x16					6960					
T29x19x7.49	1580				3170	4430	6340	6340	7495	
T29x19x15.2	3220	3800	2500		6440	9020	12890	12890	15200	
T31x19x6	1465				2940	4110	5880	5880	6910	
T31x19x8	1965		1560		3920	5480	7830	7830	9220	
T31x19x12	2930				5870	8220	11740	11740		
T31x19x13	3180		2500		6360	8910	12730	12730	14500	
T31x19x16	3840				7685	10760	15200	15200	18400	
T31x20x15					6470					
T34.4x20.2x12.6	3270				6560	9180				
T34.74x5.4x1.0	830									
T36x23x15	3210			4820	6430	9000	12860	12860	14500	
T36x23Ax22						11800				
T36x25x11.3	2100									
T36x26x10	1650									

Remark:

1. AL Value Testing Condition : 10kHz, 50mV, 1Ts.

2. Coating Material

(1) Toroid Size T8 and Below:clear parylene coating, breakdown voltage:1000Vdc, coating thickness : 0.05mm max.

(2) Toroid Size T9 and Above:green epoxy coating, breakdown voltage:1500Vdc, coating thickness : 0.6mm max.