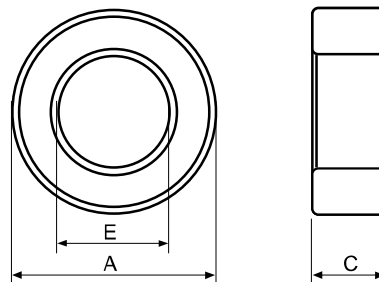


## Type : T Cores

Ordering Code:

Shape:

P4	T5.84*3.05*1.52	HP	G□
Material	Core Size	Coating	Gapped AL Value



C : Epoxy Coating of Halogen-Free    HUC : Epoxy Coating of UL & Halogen-Free  
 HP : Parylene Coating of Halogen-Free    W : Powder Coating of Halogen-Free

### ■ DIMENSIONS AND EFFECTIVE PARAMETERS

CORES	DIMENSIONS (mm)			EFFECTIVE PARAMETERS				
	PARYLENE COATING DIMENSIONS (mm)			C <sub>i</sub> (mm <sup>-1</sup> )	Le(mm)	Ae(mm <sup>2</sup> )	Ve(mm <sup>3</sup> )	Wt(g/set)
A	E	C						
T5.33x3.12x1.98	5.33 ± 0.20	3.12 ± 0.20	1.98 ± 0.20	5.93	12.66	2.14	27.04	0.12
	5.33 ± 0.20	3.12 ± 0.20	1.98 ± 0.20					
T5.4x2.6x2	5.40 ± 0.20	2.60 ± 0.20	2.00 ± 0.20	4.30	11.51	2.68	30.84	0.17
	5.40 ± 0.20	2.60 ± 0.20	2.00 ± 0.20					
T5.4x3.15x1.96	5.40 ± 0.15	3.15 ± 0.15	1.96 ± 0.15	5.95	12.80	2.15	27.55	0.14
	5.40 ± 0.15	3.15 ± 0.15	1.96 ± 0.15					
T5.84x3.05x1.52	5.84 ± 0.15	3.05 ± 0.15	1.52 ± 0.15	6.36	13.03	2.05	26.67	0.14
	5.84 ± 0.15	3.05 ± 0.15	1.52 ± 0.15					
T5.9x2.8x1.6	5.90 ± 0.30	2.80 ± 0.30	1.60 ± 0.20	5.27	12.48	2.37	29.55	0.16
	5.90 ± 0.30	2.80 ± 0.30	1.60 ± 0.20					
T5.95x2.8x2.5	5.95 ± 0.30	2.80 ± 0.30	2.50 ± 0.20	3.33	12.52	3.76	47.04	0.26
	5.95 ± 0.30	2.80 ± 0.30	2.50 ± 0.20					
T6x2x2.5	6.00 ± 0.30	2.00 ± 0.30	2.50 ± 0.20	2.29	10.35	4.53	46.86	0.31
	6.00 ± 0.30	2.00 ± 0.30	2.50 ± 0.20					
T6x3x3	6.00 ± 0.30	3.00 ± 0.30	3.00 ± 0.20	3.02	13.07	4.32	56.50	0.32
	6.00 ± 0.30	3.00 ± 0.30	3.00 ± 0.20					
T6x4x2.15	6.00 ± 0.30	4.00 ± 0.30	2.15 ± 0.20	7.21	15.29	2.12	32.42	0.17
	6.00 ± 0.30	4.00 ± 0.30	2.15 ± 0.20					
T6.22x2.8x3.38	6.22 ± 0.30	2.80 ± 0.30	3.38 ± 0.20	2.33	12.77	5.48	70.01	0.40
	6.22 ± 0.30	2.80 ± 0.30	3.38 ± 0.20					
T6.35x3.81x3.18	6.35 ± 0.30	3.81 ± 0.30	3.18 ± 0.20	3.87	15.29	3.95	60.41	0.30
	6.35 ± 0.30	3.81 ± 0.30	3.18 ± 0.20					
T6.5x3.5x2.3	6.50 ± 0.30	3.50 ± 0.25	2.30 ± 0.20	4.41	14.75	3.34	49.29	0.27
	6.50 ± 0.30	3.50 ± 0.25	2.30 ± 0.20					
T6.95x4x2	6.95 ± 0.20	4.00 ± 0.15	2.00 ± 0.15	5.69	16.36	2.88	47.04	0.25
	6.95 ± 0.20	4.00 ± 0.15	2.00 ± 0.15					
T7x4x2	7.00 ± 0.20	4.00 ± 0.15	2.00 ± 0.15	5.61	16.41	2.92	47.96	0.25
	7.00 ± 0.20	4.00 ± 0.15	2.00 ± 0.15					
T7.1x4.4x2.7	7.10 ± 0.30	4.40 ± 0.30	2.70 ± 0.30	4.86	17.39	3.58	62.20	0.31
	7.10 ± 0.30	4.40 ± 0.30	2.70 ± 0.30					
T7.62x3.18x4.8	7.62 ± 0.15	3.18 ± 0.15	4.80 ± 0.15	1.50	14.98	10.00	149.88	0.89
	7.62 ± 0.15	3.18 ± 0.15	4.80 ± 0.15					
T8x4x4	8.00 ± 0.30	4.00 ± 0.20	4.00 ± 0.30	2.27	17.42	7.69	133.92	0.76
	8.00 ± 0.30	4.00 ± 0.20	4.00 ± 0.30					
T8x4.5x4	8.00 ± 0.30	4.50 ± 0.20	4.00 ± 0.30	2.73	18.59	6.81	126.61	0.65
	8.00 ± 0.30	4.50 ± 0.20	4.00 ± 0.30					
T8.15x4.3x4.05	8.15 ± 0.30	4.30 ± 0.30	4.05 ± 0.30	2.43	18.28	7.54	137.79	0.75
	8.15 ± 0.30	4.30 ± 0.30	4.05 ± 0.30					
T8.35x3.33x4.18	8.35 ± 0.30	3.33 ± 0.20	4.18 ± 0.20	1.64	16.00	9.78	156.50	0.93
	8.35 ± 0.30	3.33 ± 0.20	4.18 ± 0.20					
T8.7x5.2x2.3	8.70 ± 0.15	5.20 ± 0.15	2.30 ± 0.15	5.31	20.90	3.94	82.29	0.42
	8.70 ± 0.15	5.20 ± 0.15	2.30 ± 0.15					
T8.89x3.81x4.83	8.89 ± 0.15	3.81 ± 0.15	4.83 ± 0.15	1.54	17.75	11.56	205.16	1.16
	8.89 ± 0.15	3.81 ± 0.15	4.83 ± 0.15					

**MANUFACTURING CAPABILITY**

Gapped Toroid Sizes(OD)	2.50mm - 12.00mm
Height	0.70mm - 8.00mm
Gap Sizes :	0.03mm - 0.80mm
AL Tolerance	AL $\pm$ 10%

**APPLICATIONS**

<b>Power</b>	DC-DC Converters Compact Power Transformer Small, Low Profile Power Inductors
<b>Telecom</b>	xDSL pass-band Filiterers Spilters EMI Inductors Filiter Inductors with Tight Tolerance

**■ ELECTRICAL CHARACTERISTICS**

CORES	AL $\pm$ 25% (nH/N <sup>2</sup> )							AL $\pm$ 30% (nH/N <sup>2</sup> )			
	P4	P47	P5	N42	A043	A05	A07	A10	A102	A121	A151
T5.33x3.12x1.98											3100
T5.4x2.6x2										3360	
T5.4x3.15x1.96										2470	
T5.84x3.05x1.52	490	570		725	860	980	1370	1960	1960	2290	2860
T5.9x2.8x1.6		715									
T5.95x2.8x2.5										4320	5400
T6x2x2.5	1370	1645				2740	3850	5490		6590	
T6x3x3	1000	1200	800	1520	1800	2200	2800	4000	4000	4800	6000
T6x4x2.15	430	515	340		700	870	1200	1740	1740	2080	
T6.22x2.8x3.38	1280	1540		1950		2560		5130	5130		
T6.35x3.81x3.18	790	950	630	1210	1430	1590	2220	3180	3180	3820	4870
T6.5x3.5x2.3	690					1380	1930				4140
T6.95x4x2	530	650	430			1070	1500	2150		2580	3230
T7x4x2		650	440			1090	1520	2100		2600	3270
T7.1x4.4x2.7					1140	1260	1770				3800
T7.62x3.18x4.8	2090	2500		3000	3550	4175	5845	8350	8350	9480	11850
T8x4x4	1300			2030	2400	2650	3700	5300	5300	6400	8000
T8x4.5x4	1100		900			2200	3100	4450	4450	5380	6725
T8.15x4.3x4.05	1300							5010	5010	6015	7520
T8.35x3.33x4.18				2730		3600	5030	7185	7185	8625	10790
T8.7x5.2x2.3	560(P41)										
T8.89x3.81x4.83	1930										11600

Remark:

1. AL Value Testing Condition : 10kHz, 50mV, 1Ts.

2. Coating Material

(1) Toroid Size T8 and Below:clear parylene coating, breakdown voltage:1000Vdc, coating thickness : 0.05mm max.

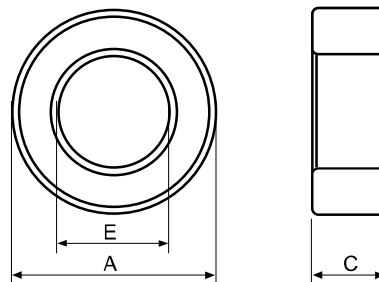
(2) Toroid Size T9 and Above:green epoxy coating, breakdown voltage:1500Vdc, coating thickness : 0.6mm max.

## Type : T Cores

Ordering Code:

Shape:

A05	T9*5*3	C	G□
Material	Core Size	Coating	Gapped AL Value



C : Epoxy Coating of Halogen-Free    HUC : Epoxy Coating of UL & Halogen-Free  
 HP : Parylene Coating of Halogen-Free    W : Powder Coating of Halogen-Free

### ■ DIMENSIONS AND EFFECTIVE PARAMETERS

CORES	DIMENSIONS (mm)			EFFECTIVE PARAMETERS				
	EPOXY COATING DIMENSIONS (mm)			C <sub>i</sub> (mm <sup>-1</sup> )	Le(mm)	Ae(mm <sup>2</sup> )	Ve(mm <sup>3</sup> )	Wt(g/set)
	A	E	C					
T9x5x3	9.10 ± 0.30	5.10 ± 0.30	3.00 ± 0.30	3.56	20.77	5.83	121.12	0.60
	10.00max	4.20min	3.90max					
T9x5x5	9.10 ± 0.30	5.10 ± 0.30	5.00 ± 0.30	2.14	20.77	9.72	201.86	1.00
	10.00max	4.20min	5.90max					
T9x5x5.5	9.10 ± 0.30	5.10 ± 0.30	5.50 ± 0.30	1.94	20.77	10.69	222.05	1.09
	10.00max	4.20min	6.40max					
T9x5x7	9.10 ± 0.30	5.10 ± 0.30	7.00 ± 0.30	1.53	20.77	13.60	282.61	1.41
	10.00max	4.20min	7.90max					
T9x6x3	8.90 ± 0.30	6.00 ± 0.30	3.00 ± 0.30	5.17	22.93	4.44	101.78	0.60
	9.80max	5.10min	3.90max					
T9x6x5	8.90 ± 0.30	6.00 ± 0.30	5.00 ± 0.30	3.10	22.93	7.40	169.63	0.86
	9.80max	5.10min	5.90max					
T9.5x3x1.7	9.50 ± 0.40	3.00 ± 0.30	1.70 ± 0.20	3.21	15.88	4.95	78.62	0.51
	10.50max	2.10min	2.50max					
T9.53x4.75x3.2	9.53 ± 0.25	4.75 ± 0.25	3.20 <sup>+0.13</sup> / <sub>-0.12</sub>	2.82	20.72	7.35	152.19	0.80
	10.38max	3.90min	3.93max					
T9.53x4.75x4.8	9.53 ± 0.25	4.75 <sup>+0.13</sup> / <sub>-0.12</sub>	4.80 <sup>+0.13</sup> / <sub>-0.12</sub>	1.88	20.72	11.02	228.28	1.09
	10.38max	4.03min	5.53max					
T9.53x4.75x4.9	9.53 ± 0.25	4.75 <sup>+0.13</sup> / <sub>-0.12</sub>	4.90 <sup>+0.13</sup> / <sub>-0.12</sub>	1.84	20.72	11.25	233.04	1.26
	10.38max	4.03min	5.63max					
T9.53x4.75x6.35	9.53 ± 0.20	4.75 ± 0.20	6.35 ± 0.18	1.42	20.72	14.58	302.00	1.62
	10.33max	3.95min	7.13max					
T9.53x5.59x3.2	9.53 ± 0.30	5.59 ± 0.25	3.20 <sup>+0.13</sup> / <sub>-0.12</sub>	3.68	22.66	6.16	139.51	0.75
	10.43max	4.74min	3.93max					
T9.53x5.59x4	9.53 ± 0.30	5.59 ± 0.25	4.00 <sup>+0.13</sup> / <sub>-0.12</sub>	2.94	22.66	7.70	174.39	0.91
	10.43max	4.74min	4.73max					
T9.53x5.59x4.9	9.53 ± 0.30	5.59 ± 0.25	4.90 <sup>+0.13</sup> / <sub>-0.12</sub>	2.40	22.66	9.43	213.62	1.14
	10.43max	4.74min	5.63max					
T9.53x5.59x7.11	9.53 ± 0.30	5.59 ± 0.25	7.11 ± 0.25	1.66	22.66	13.68	309.97	1.61
	10.43max	4.74min	8.01max					

**MANUFACTURING CAPABILITY**

Gapped Toroid Sizes(OD)	2.50mm - 12.00mm
Height	0.70mm - 8.00mm
Gap Sizes :	0.03mm - 0.80mm
AL Tolerance	AL $\pm$ 10%

**APPLICATIONS**

<b>Power</b>	DC-DC Converters Compact Power Transformer Small, Low Profile Power Inductors
<b>Telecom</b>	xDSL pass-band Filiterers Spilters EMI Inductors Filtier Inductors with Tight Tolerance

**■ ELECTRICAL CHARACTERISTICS**

CORES	AL $\pm$ 25% (nH/N <sup>2</sup> )						AL $\pm$ 30% (nH/N <sup>2</sup> )			
	P4	P47	P5	N42	A05	A07	A10	A102	A121	A151
<b>T9x5x3</b>	880	1020	680	1300	1760	2470	3520	3520	4060	5070
<b>T9x5x5</b>	1469		1130		2938	4114	5887	5887	6765	8460
<b>T9x5x5.5</b>	1616				3232	4525	6465	6465		
<b>T9x5x7</b>	2057		1600		4114	5760	8229	8229	9600	
<b>T9x6x3</b>	585		440		1170	1635	2330	2330	2800	3500
<b>T9x6x5</b>	980					2725	3890	3890		
<b>T9.5x3x1.7</b>							3540	3540		
<b>T9.53x4.75x3.2</b>	1110	1285	855	1630	2230	3120	4450	4450	5140	6430
<b>T9.53x4.75x4.8</b>	1670			2450	3340	4680	6680	6680	7720	9600
<b>T9.53x4.75x4.9</b>	1730				3460	4840	6920	6920	7880	9845
<b>T9.53x4.75x6.35</b>	2190	2550		3330	4380	6140	8770	8770	10210	12760
<b>T9.53x5.59x3.2</b>	850		670		1700	2380	3400	3400		
<b>T9.53x5.59x4</b>	1040	1250	830		2080	2920	4170	4170	5000	6250
<b>T9.53x5.59x4.9</b>	1300		1020		2610	3650	5220	5220	6130	7660
<b>T9.53x5.59x7.11</b>	1900				3790	5310	7590	7590		

Remark:

1. AL Value Testing Condition : 10kHz, 50mV, 1Ts.

2. Coating Material

(1) Toroid Size T8 and Below:clear parylene coating, breakdown voltage:1000Vdc, coating thickness : 0.05mm max.

(2) Toroid Size T9 and Above:green epoxy coating, breakdown voltage:1500Vdc, coating thickness : 0.6mm max.