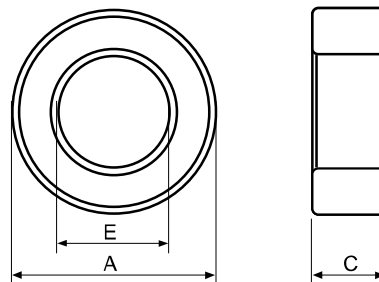
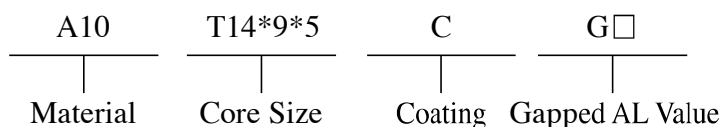


## Type : T Cores

Ordering Code:

Shape:



C : Epoxy Coating of Halogen-Free    HUC : Epoxy Coating of UL & Halogen-Free  
 HP : Parylene Coating of Halogen-Free    W : Powder Coating of Halogen-Free

### ■ DIMENSIONS AND EFFECTIVE PARAMETERS

CORES	DIMENSIONS (mm)			EFFECTIVE PARAMETERS				
	EPOXY COATING DIMENSIONS (mm)			C <sub>i</sub> (mm <sup>-1</sup> )	Le(mm)	Ae(mm <sup>2</sup> )	Ve(mm <sup>3</sup> )	Wt(g/set)
	A	E	C					
T14x9x5	14.00 ± 0.40	9.00 ± 0.30	5.00 ± 0.30	2.84	34.98	12.30	430.19	2.08
	15.00max	8.10min	5.90max					
T14.3x9.7x6.3	14.30 ± 0.30	9.70 ± 0.30	6.30 ± 0.30	2.57	36.77	14.31	526.14	2.81
	15.20max	8.80min	7.20max					
T15.7x10.2x6.8	15.70 ± 0.40	10.20 ± 0.40	6.80 ± 0.30	2.14	39.45	18.41	726.37	3.70
	16.70max	9.20min	7.60max					
T15.88x8.89x4.7	15.88 ± 0.40	8.89 ± 0.30	4.70 ± 0.30	2.30	36.81	15.97	587.97	3.17
	16.88max	7.99min	5.60max					
T16x7x9	16.00 ± 0.30	7.00 ± 0.20	9.00 ± 0.20	0.84	32.32	38.27	1236.87	7.11
	16.90max	6.20min	9.80max					
T16x8x8	16.00 ± 0.30	8.00 ± 0.30	8.00 ± 0.30	1.13	34.84	30.75	1071.34	5.83
	16.90max	7.10min	8.90max					
T16x9x5	16.00 ± 0.40	9.50 ± 0.40	5.00 ± 0.30	2.18	37.18	17.03	633.06	3.19
	17.00max	8.50min	5.90max					
T16x9x8	16.00 ± 0.40	9.50 ± 0.40	8.00 ± 0.30	1.37	37.18	27.24	1012.90	4.94
	17.00max	8.50min	8.90max					
T16x9.6x6.1	16.00 ± 0.30	9.60 ± 0.30	6.10 ± 0.30	2.02	38.52	19.10	735.68	3.64
	16.90max	8.70min	7.00max					
T16x10x5	16.00 ± 0.30	10.00 ± 0.30	5.00 ± 0.30	2.67	39.37	14.73	579.87	2.96
	16.90max	9.10min	5.90max					
T16x12x7	16.00 ± 0.30	12.00 ± 0.30	7.00 ± 0.30	3.12	43.38	13.90	603.17	2.86
	16.90max	11.10min	7.90max					
T16x12x8	16.00 ± 0.30	12.00 ± 0.30	8.00 ± 0.30	2.73	43.38	15.89	689.34	3.53
	16.90max	11.10min	8.90max					
T16.4x12x8	16.40 ± 0.30	12.00 ± 0.30	8.00 ± 0.30	2.51	43.89	17.46	766.27	3.80
	17.30max	11.10min	8.90max					
T17x10.6x6.8	17.00 ± 0.30	10.60 ± 0.30	6.80 ± 0.30	1.96	41.78	21.36	892.47	4.54
	17.90max	9.70min	7.70max					
T18x10x7	18.00 ± 0.30	10.00 ± 0.30	7.00 ± 0.30	1.53	41.55	27.21	1130.43	6.13
	18.90max	9.10min	7.90max					
T18x10x10	18.00 ± 0.30	10.00 ± 0.30	10.00 ± 0.30	1.07	41.55	38.87	1614.89	8.77
	18.90max	9.10min	10.90max					
T18x12x6	18.00 ± 0.30	11.90 ± 0.20	6.00 ± 0.20	2.58	45.86	17.76	814.21	4.16
	18.90max	11.10min	6.80max					
T19x11x5	19.00 ± 0.30	11.00 ± 0.30	5.00 ± 0.30	2.30	44.86	19.51	875.14	4.43
	19.90max	10.10min	5.90max					
T19x13x6	19.00 ± 0.30	13.00 ± 0.30	6.00 ± 0.20	2.76	49.08	17.79	872.90	4.39
	19.90max	12.10min	6.80max					
T19.3x10.2x10.4	19.30 ± 0.40	10.20 ± 0.30	10.40 ± 0.30	0.95	43.34	45.75	1982.76	10.55
	20.30max	9.30min	11.30max					

**MANUFACTURING CAPABILITY**

Gapped Toroid Sizes(OD)	12.00mm - 38.00mm
Height	3.00mm - 15.00mm
Gap Sizes :	0.45mm - 2.00mm
AL Tolerance	AL $\pm$ 10%

**APPLICATIONS**

<b>Power</b>	DC-DC Converters Compact Power Transformer Small, Low Profile Power Inductors
<b>Telecom</b>	xDSL pass-band Filiter Spilters EMI Inductors Filiters Inductors with Tight Tolerance

**■ ELECTRICAL CHARACTERISTICS**

CORES	AL $\pm$ 25% (nH/N <sup>2</sup> )					AL $\pm$ 30% (nH/N <sup>2</sup> )				
	P4	P47	P5	N42	A05	A07	A10	A102	A121	A151
T14x9x5	1100	1400	870		2210	3090	4420	4420	5220	6530
T14.3x9.7x6.3					2415	3380	4830	4830	5790	7235
T15.7x10.2x6.8						4600				
T15.88x8.89x4.7	1330		1060		2650	3710	5310	5310	6370	7960
T16x7x9	3520	4220			7040	9860	14000	14000	16900	21100
T16x8x8					5540	7500	10670	10670	13300	16640
T16x9x5	1300	1530	1020	2000	2600	3650	5210	5210	6250	7650
T16x9x8	2040		1630		4080	5710	8160	8160	9700	12240
T16x9.6x6.1	1520	1830	1220		3050	4270	6100	6100	7320	
T16x10x5					2350	3230	4620		5540	6925
T16x12x7	1000			1520	2000	2800	4020	4020		6000
T16x12x8	1150			1740	2300	3220	4600	4600	5400	6860
T16.4x12x8									5950	
T17x10.6x6.8	1580				3155	4420	6300	6300		
T18x10x7	2054				4110	5760	8230	8230	9600	12000
T18x10x10	2940		2280		5880	8230	11750	11750	13720	17155
T18x12x6	1210				2430	3400	4860	4860	5760	7345
T19x11x5	1300	1600	1060		2670	3800	5300		6400	8000
T19x13x6	1100		900		2200	3100	4500	4500	5400	6750
T19.3x10.2x10.4	3210				6420	8990	12840	12840	15400	19260

Remark:

1. AL Value Testing Condition : 10kHz, 50mV, 1Ts.

2. Coating Material

(1) Toroid Size T8 and Below:clear parylene coating, breakdown voltage:1000Vdc, coating thickness : 0.05mm max.

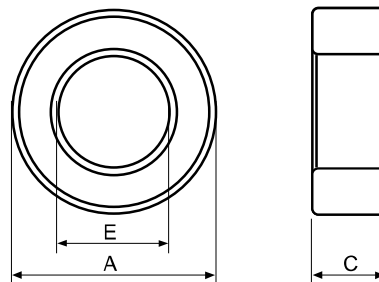
(2) Toroid Size T9 and Above:green epoxy coating, breakdown voltage:1500Vdc, coating thickness : 0.6mm max.

## Type : T Cores

Ordering Code:

Shape:

A10	T20*10*7	C	G□
Material	Core Size	Coating	Gapped AL Value



C : Epoxy Coating of Halogen-Free    HUC : Epoxy Coating of UL & Halogen-Free  
 HP : Parylene Coating of Halogen-Free    W : Powder Coating of Halogen-Free

### ■ DIMENSIONS AND EFFECTIVE PARAMETERS

CORES	DIMENSIONS (mm)			EFFECTIVE PARAMETERS				
	EPOXY COATING DIMENSIONS (mm)			C <sub>1</sub> (mm <sup>-1</sup> )	Le(mm)	Ae(mm <sup>2</sup> )	Ve(mm <sup>3</sup> )	Wt(g/set)
	A	E	C					
T20x10x7	20.00 ± 0.40	10.00 ± 0.40	7.00 ± 0.30	1.29	43.55	33.63	1464.72	8.05
	21.00max	9.00min	7.90max					
T20x10x10	20.00 ± 0.40	10.00 ± 0.40	10.00 ± 0.30	0.91	43.55	48.05	2092.46	11.24
	21.00max	9.00min	10.90max					
T20x10x12	20.00 ± 0.40	10.00 ± 0.40	12.00 ± 0.30	0.76	43.55	57.65	2510.95	13.53
	21.00max	9.00min	12.90max					
T20x11x10	20.00 ± 0.40	11.00 ± 0.40	10.00 ± 0.30	1.05	45.91	43.68	2005.53	10.29
	21.00max	10.00min	10.90max					
T20x11x15	20.00 ± 0.40	11.00 ± 0.40	15.00 ± 0.30	0.70	45.91	65.52	3008.29	15.23
	21.00max	10.00min	15.90max					
T20x12x8	20.00 ± 0.40	12.00 ± 0.40	8.00 ± 0.30	1.54	48.14	31.31	1507.55	9.17
	21.00max	11.00min	8.90max					
T20x16x3.6	20.00 ± 0.40	16.00 ± 0.40	3.60 ± 0.25	7.82	56.08	7.17	402.12	1.93
	21.00max	15.00min	4.45max					
T22x11x7	22.00 ± 0.30	11.00 ± 0.30	7.00 ± 0.30	1.29	47.91	36.99	1772.31	9.74
	22.90max	10.10min	7.90max					
T22x14x6.5	22.00 ± 0.40	14.00 ± 0.40	6.50 ± 0.30	2.14	54.67	25.56	1397.42	6.77
	23.00max	13.00min	7.40max					
T22x14x8	22.00 ± 0.40	14.00 ± 0.40	8.00 ± 0.30	1.74	54.67	31.46	1719.90	8.61
	23.00max	13.00min	8.90max					
T22x14x10	22.00 ± 0.40	14.00 ± 0.40	10.00 ± 0.30	1.39	54.67	39.33	2149.88	11.33
	23.00max	13.00min	10.90max					
T22x14x12.7	22.00 ± 0.40	14.00 ± 0.40	12.70 ± 0.30	1.09	54.67	49.94	2730.34	14.04
	23.00max	13.00min	13.60max					
T22.1x13.72x6.35	22.10 ± 0.40	13.72 ± 0.40	6.35 ± 0.30	2.08	54.19	26.11	1414.81	7.04
	23.10max	12.72min	7.25max					
T23x11x6	23.00 ± 0.40	11.00 ± 0.40	6.00 ± 0.30	1.42	48.86	34.41	1681.17	9.40
	24.00max	10.00min	6.90max					
T23x14x7	23.00 ± 0.40	14.00 ± 0.40	7.00 ± 0.30	1.81	55.80	30.86	1722.01	8.53
	24.00max	13.00min	7.90max					
T24x18x6	24.00 ± 0.40	18.00 ± 0.40	6.00 ± 0.30	3.64	65.07	17.88	1163.25	5.61
	25.00max	17.00min	6.90max					
T25x9x2.5	25.00 ± 0.40	9.00 ± 0.40	2.50 ± 0.30	2.46	45.14	18.35	828.12	5.17
	26.00max	8.00min	3.40max					
T25x15x5	25.00 ± 0.40	15.00 ± 0.40	5.00 ± 0.30	2.46	60.18	24.46	1472.21	7.44
	26.00max	14.00min	5.90max					
T25x15x8	25.00 ± 0.40	15.00 ± 0.40	8.00 ± 0.30	1.54	60.18	39.14	2355.54	12.06
	26.00max	14.00min	8.90max					
T25x15x9	25.00 ± 0.40	15.00 ± 0.40	9.00 ± 0.30	1.37	60.18	44.03	2649.98	13.63
	26.00max	14.00min	9.90max					
T25x15x10	25.00 ± 0.40	15.00 ± 0.40	10.00 ± 0.30	1.23	60.18	48.93	2944.42	14.89
	26.00max	14.00min	10.90max					
T25x15x13	25.00 ± 0.40	15.00 ± 0.40	13.00 ± 0.30	0.95	60.18	63.60	3827.75	19.43
	26.00max	14.00min	13.90max					
T25x15x15	25.00 ± 0.40	15.00 ± 0.40	15.00 ± 0.30	0.82	60.18	73.30	4416.64	23.30
	26.00max	14.00min	15.90max					

**MANUFACTURING CAPABILITY**

Gapped Toroid Sizes(OD)	12.00mm - 38.00mm
Height	3.00mm - 15.00mm
Gap Sizes :	0.45mm - 2.00mm
AL Tolerance	AL $\pm$ 10%

**APPLICATIONS**

<b>Power</b>	DC-DC Converters Compact Power Transformer Small, Low Profile Power Inductors
<b>Telecom</b>	xDSL pass-band Filiterers Splitters EMI Inductors Filer Inductors with Tight Tolerance

**■ ELECTRICAL CHARACTERISTICS**

CORES	AL $\pm$ 25% (nH/N <sup>2</sup> )						AL $\pm$ 30% (nH/N <sup>2</sup> )			
	P4	P47	P5	N42	A05	A07	A10	A102	A121	A151
T20x10x7	2335				4670	6540	9300	9300	11200	14000
T20x10x10	3330		2660		6670	9300	13300	13300	16000	19000
T20x10x12	4000						16000	16000	19000	
T20x11x10	3200		2300		5800	8100	11600	11600	13950	
T20x11x15	4790		3450		8700	12200	17400	17400		26000
T20x12x8					4000		8000	8000		
T20x16x3.6							1600			
T22x11x7	2340					6540	9330	9330		
T22x14x6.5	1473	1730	1155		2940	4110	5870	5870	6930	8670
T22x14x8	1804	2130	1420		3620	5060	7230	7230	8340	10675
T22x14x10	2259		1780		4520	6330	9040	9040	10670	13340
T22x14x12.7	2886		2260		5740	8040	11480	11480	13560	16945
T22.1x13.72x6.35	1485	1780			2970	4160	5950	5950	7130	8920
T23x11x6	2100									
T23x14x7	1730		1360		3470	4860	6950	6950	8180	10210
T24x18x6		1030								
T25x9x2.5	1176	1410								
T25x15x5	1250		1000		2500	3500	5000	5000	6000	7500
T25x15x8	2040		1600	3040	4090	5720	8200	8200	9600	12010
T25x15x9	2300				4600	6440	9200	9200	10800	
T25x15x10	2550	3000	2000	3800	5110	7150	10220	10220	11000	15010
T25x15x13	3322				6640	9300	13270	13270	15600	19510
T25x15x15	3830	4500			7660	10730	15330	15330	17500	22500

Remark:

1. AL Value Testing Condition : 10kHz, 50mV, 1Ts.

2. Coating Material

(1) Toroid Size T8 and Below:clear parylene coating, breakdown voltage:1000Vdc, coating thickness : 0.05mm max.

(2) Toroid Size T9 and Above:green epoxy coating, breakdown voltage:1500Vdc, coating thickness : 0.6mm max.