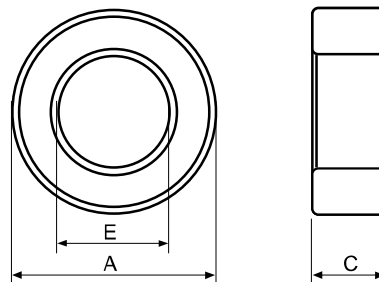


Type : T Cores

Ordering Code:

Shape:

A05	T10*5*3	C	G□
Material	Core Size	Coating	Gapped AL Value



C : Epoxy Coating of Halogen-Free HUC : Epoxy Coating of UL & Halogen-Free
 HP : Parylene Coating of Halogen-Free W : Powder Coating of Halogen-Free

■ DIMENSIONS AND EFFECTIVE PARAMETERS

CORES	DIMENSIONS (mm)			EFFECTIVE PARAMETERS				
	EPOXY COATING DIMENSIONS (mm)			C _i (mm ⁻¹)	Le(mm)	Ae(mm ²)	Ve(mm ³)	Wt(g/set)
	A	E	C					
T10x5x2.3	10.00 ± 0.20	5.00 ± 0.13	2.30 ± 0.13	3.94	21.78	5.53	120.32	0.66
	10.80max	4.27min	3.03max					
T10x5x3	10.00 ± 0.20	5.00 ± 0.13	3.00 ± 0.13	3.02	21.78	7.21	156.93	0.84
	10.80max	4.27min	3.73max					
T10x5x5	10.00 ± 0.20	5.00 ± 0.13	5.00 ± 0.13	1.81	21.78	12.01	261.56	1.41
	10.80max	4.27min	5.73max					
T10x6x2.78	10.10 ± 0.30	6.10 ± 0.30	2.78 ± 0.30	4.42	24.07	5.44	130.97	0.67
	11.00max	5.20min	3.68max					
T10x6x4	10.10 ± 0.30	6.10 ± 0.30	4.00 ± 0.30	3.08	24.07	7.83	188.44	0.98
	11.00max	5.20min	4.90max					
T10x6x5	10.10 ± 0.30	6.10 ± 0.30	5.00 ± 0.30	2.46	24.07	9.79	235.55	1.25
	11.00max	5.20min	5.90max					
T10x6x6	10.10 ± 0.30	6.10 ± 0.30	6.00 ± 0.30	2.05	24.07	11.74	282.66	1.48
	11.00max	5.20min	6.90max					
T10.6x5.2x4.4	10.60 ± 0.30	5.20 ± 0.30	4.40 ± 0.20	2.01	22.84	11.39	260.14	1.41
	11.50max	4.30min	5.20max					
T11.5x7.5x3.6	11.50 ± 0.30	7.50 ± 0.30	3.60 ± 0.30	4.08	28.96	7.09	205.33	1.08
	11.240max	6.60min	4.50max					
T12x6x4	12.00 ± 0.40	6.00 ± 0.30	4.00 ± 0.30	2.27	26.13	11.53	301.31	1.50
	13.00max	5.10min	4.90max					
T12.4x7.8x3.75	12.40 ± 0.40	7.80 ± 0.30	3.75 ± 0.30	3.61	30.62	8.47	259.43	1.34
	13.40max	6.90min	4.65max					
T12.5x7.5x5	12.50 ± 0.30	7.50 ± 0.30	5.00 ± 0.30	2.46	30.09	12.23	368.05	1.93
	13.40max	6.60min	5.90max					
T12.5x7.5x6.45	12.50 ± 0.30	7.50 ± 0.30	6.45 ± 0.30	1.91	30.09	15.78	474.79	2.45
	13.40max	6.60min	7.35max					
T12.7x5.16x6.35	12.70 ± 0.40	5.16 ± 0.30	6.35 ± 0.30	1.10	24.59	22.38	550.49	3.21
	13.70max	4.26min	7.25max					
T12.7x7.14x4.78	12.70 ± 0.40	7.14 ± 0.30	4.78 ± 0.30	2.28	29.51	12.93	381.43	2.00
	13.70max	6.24min	5.68max					
T12.7x7.14x6.35	12.70 ± 0.40	7.14 ± 0.30	6.35 ± 0.30	1.72	29.51	17.17	506.72	2.67
	13.70max	6.24min	7.25max					

MANUFACTURING CAPABILITY

Gapped Toroid Sizes(OD)	2.50mm - 12.00mm
Height	0.70mm - 8.00mm
Gap Sizes :	0.03mm - 0.80mm
AL Tolerance	AL \pm 10%

APPLICATIONS

Power	DC-DC Converters Compact Power Transformer Small, Low Profile Power Inductors
Telecom	xDSL pass-band Filiter Spilters EMI Inductors Filtier Inductors with Tight Tolerance

■ ELECTRICAL CHARACTERISTICS

CORES	AL \pm 25% (nH/N ²)						AL \pm 30% (nH/N ²)			
	P4	P47	P5	N42	A05	A07	A10	A102	A121	A151
T10x5x2.3	760	920			1530	2147	3070		3680	4600
T10x5x3	1000	1200			2000	2800	4000	4000	4800	6000
T10x5x5	1650	2000	1330		3300	4650	6650	6650	8000	10000
T10x6x2.78	680		550		1350	1900	2740	2740	3300	4120
T10x6x4	1020	1185	800	1500	2040	2850	4080	4080	4900	5930
T10x6x5	1270	1480	990	1900	2550	3570	5100	5100	5820	7410
T10x6x6	1530	1800	1220		3060	4290	6130	6130	7350	8895
T10.6x5.2x4.4	1500		1200		3000	4200	6000	6000		
T11.5x7.5x3.6	758				1510	2120	3030		3635	4545
T12x6x4	1350	1600			2700	3800	5400	5400	6000	8000
T12.4x7.8x3.75					1790		3420	3420		5130
T12.5x7.5x5	1250	1500	1000		2500	3500	5000	5000	6000	7500
T12.5x7.5x6.45						4510				
T12.7x5.16x6.35	2680	3220			5360	7500	10730	10730		
T12.7x7.14x4.78	1340				2680	3750	5360	5360	6430	8040
T12.7x7.14x6.35	1780		1420		3560	4985	7120	7120	8550	10685

Remark:

1. AL Value Testing Condition : 10kHz, 50mV, 1Ts.

2. Coating Material

(1) Toroid Size T8 and Below:clear parylene coating, breakdown voltage:1000Vdc, coating thickness : 0.05mm max.

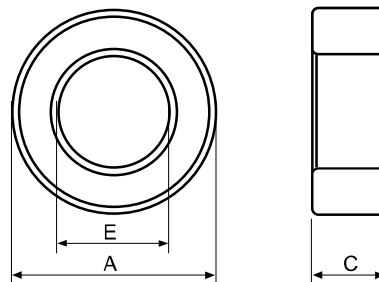
(2) Toroid Size T9 and Above:green epoxy coating, breakdown voltage:1500Vdc, coating thickness : 0.6mm max.

Type : T Cores

Ordering Code:

Shape:

P4	T12.7*7.92*4.7	C	G□
Material	Core Size	Coating	Gapped AL Value



C : Epoxy Coating of Halogen-Free HUC : Epoxy Coating of UL & Halogen-Free
 HP : Parylene Coating of Halogen-Free W : Powder Coating of Halogen-Free

■ DIMENSIONS AND EFFECTIVE PARAMETERS

CORES	DIMENSIONS (mm)			EFFECTIVE PARAMETERS				
	EPOXY COATING DIMENSIONS (mm)			C _i (mm ⁻¹)	Le(mm)	Ae(mm ²)	Ve(mm ³)	Wt(g/set)
	A	E	C					
T12.7x7.92x4.7	12.70 ± 0.40	7.92 ± 0.30	4.70 ± 0.30	2.83	31.22	11.03	344.21	1.61
	13.70max	7.02min	5.60max					
T12.7x7.92x4.9	12.70 ± 0.40	7.92 ± 0.30	4.90 ± 0.30	2.72	31.22	11.50	358.86	1.70
	13.70max	7.02min	5.80max					
T12.7x7.92x5.2	12.70 ± 0.40	7.92 ± 0.30	5.20 ± 0.30	2.56	31.22	12.20	380.83	1.80
	13.70max	7.02min	6.10max					
T12.7x7.92x6.35	12.70 ± 0.40	7.92 ± 0.30	6.35 ± 0.30	2.10	31.22	14.90	465.05	2.33
	13.70max	7.02min	7.25max					
T12.7x7.92x7	12.70 ± 0.40	7.92 ± 0.30	7.00 ± 0.30	1.90	31.22	16.42	512.66	2.65
	13.70max	7.02min	7.90max					
T12.7x8.02x6.35	12.70 ± 0.25	8.02 ± 0.25	6.35 ± 0.15	2.15	31.43	14.60	458.86	2.39
	13.50max	7.17min	7.10max					
T12.7x8.12x5.08	12.70 ± 0.40	8.12 ± 0.30	5.08 ± 0.30	2.77	31.64	11.44	361.98	1.82
	13.70max	7.22min	5.98max					
T12.85x7.35x5	12.85 ± 0.40	7.35 ± 0.30	5.00 ± 0.30	2.25	30.14	13.40	403.78	2.14
	13.85max	6.45min	5.90max					
T13.21x7.37x3.96	13.21 ± 0.40	7.37 ± 0.30	3.96 ± 0.30	2.72	30.56	11.24	343.54	1.81
	14.21max	6.47min	4.86max					
T13.3x7.1x12.7	13.30 ± 0.30	7.10 ± 0.30	12.70 ± 0.30	0.79	30.03	38.10	1144.33	6.17
	14.20max	6.20min	13.60max					
T13.3x8.3x5	13.30 ± 0.30	8.30 ± 0.30	5.00 ± 0.30	2.67	32.70	12.27	401.31	2.09
	14.20max	7.40min	5.90max					
T14x7x7	14.00 ± 0.40	7.00 ± 0.30	7.00 ± 0.30	1.29	30.49	23.54	717.71	3.88
	15.00max	6.10min	7.90max					
T14x7.5x7	14.00 ± 0.40	7.50 ± 0.30	7.00 ± 0.30	1.44	31.68	22.03	697.66	3.69
	15.00max	6.60min	7.90max					
T14x8x4	14.00 ± 0.40	8.00 ± 0.30	4.00 ± 0.30	2.81	32.82	11.69	383.69	1.97
	15.00max	7.10min	4.90max					
T14x8x7	14.00 ± 0.40	8.00 ± 0.30	7.00 ± 0.30	1.60	32.82	20.46	671.46	3.45
	15.00max	7.10min	7.90max					
T14x8x9	14.00 ± 0.40	8.00 ± 0.30	9.00 ± 0.30	1.25	32.82	26.31	863.31	4.48
	15.00max	7.10min	9.90max					
T14x8.4x4	14.00 ± 0.40	8.40 ± 0.30	4.00 ± 0.30	3.08	33.70	10.96	369.35	1.97
	15.00max	7.50min	4.90max					
T14x8.4x12	14.00 ± 0.40	8.40 ± 0.30	12.00 ± 0.30	1.03	33.70	32.88	1108.05	5.63
	15.00max	7.50min	12.90max					

MANUFACTURING CAPABILITY

Gapped Toroid Sizes(OD)	12.00mm - 38.00mm
Height	3.00mm - 15.00mm
Gap Sizes :	0.45mm - 2.00mm
AL Tolerance	AL \pm 10%

APPLICATIONS

Power	DC-DC Converters Compact Power Transformer Small, Low Profile Power Inductors
Telecom	xDSL pass-band Filiter Spilters EMI Inductors Filer Inductors with Tight Tolerance

■ ELECTRICAL CHARACTERISTICS

CORES	AL \pm 25% (nH/N ²)					AL \pm 30% (nH/N ²)				
	P4	P47	P5	N42	A05	A07	A10	A102	A121	A151
T12.7x7.92x4.7	1100	1300	870		2220	3110	4460	4460	5230	6540
T12.7x7.92x4.9	1156	1390			2310	3240	4630	4630	5456	6940
T12.7x7.92x5.2	1227	1470		1830	2455	3437	4910	4910	5890	7230
T12.7x7.92x6.35	1487	1760	1170	2240	2990	4190	5950	5950	7070	8840
T12.7x7.92x7	1653	1950	1290		3300	4650	6610	6610	7795	9740
T12.7x8.02x6.35							5800			
T12.7x8.12x5.08					2200		4470	4470		
T12.85x7.35x5	1400				2790	3910	5580	5580	6540	8170
T13.21x7.37x3.96	1120	1350	900		2250	3150	4500	4500		
T13.3x7.1x12.7							15440		18530	23000
T13.3x8.3x5	1150	1390	900		2300	3200	4600	4600	5500	6800
T14x7x7		2800			4670	6540	9300	9300	11210	14000
T14x7.5x7					4230	5930	8400	8400	10160	12700
T14x8x4	1119	1310	870		2240	3130	4480	4480	5240	6550
T14x8x7	1956		1530		3920	5480	7840	7840	9170	11460
T14x8x9	2510				5040	7045	10080	10080	11790	14730
T14x8.4x4	1020		800		2040	2860	4080	4080	4800	
T14x8.4x12	3060				6130	8580	12260	12260	14400	

Remark:

1. AL Value Testing Condition : 10kHz, 50mV, 1Ts.

2. Coating Material

(1) Toroid Size T8 and Below:clear parylene coating, breakdown voltage:1000Vdc, coating thickness : 0.05mm max.

(2) Toroid Size T9 and Above:green epoxy coating, breakdown voltage:1500Vdc, coating thickness : 0.6mm max.